

# 2x2 or 2x4 LED Light Panel Installation Instructions

## IMPORTANT

Please read these instructions carefully before installing the fixture.

## WARNING

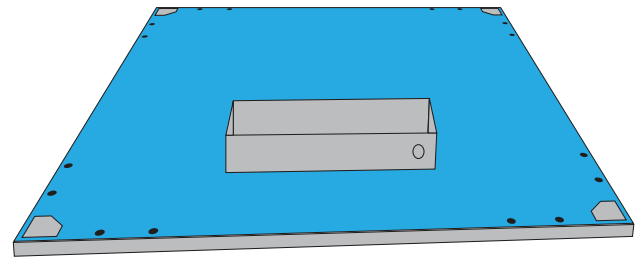
- Risk of electrical shock or fire
- Verify power is off before installing or handling fixture
- This fixture is not suitable for damp, wet or hazardous locations
- Never handle the fixture with wet hands or while standing on wet/damp surfaces or in water
- **Under no circumstances should household current be applied to the light panel. Driver MUST BE USED TO POWER LED PANEL.**

This fixture must be wired and installed in accordance with the National Electrical Code and all applicable local codes and requirements.

## DROP IN INSTALLATION

These LED light panels are designed to be a direct replacement for fixtures that fit standard 9/16" -15/16" t-bar systems. Some 9/16" grid systems may require the use of tabs to secure the panel into the t-bar system.

- Remove existing fixture or select a location for fixture.
- Place fixture into grid system. Remove ceiling tiles as needed for access.
- Secure the fixture in accordance with local laws and codes.
- Follow the wiring instructions to complete the installation.



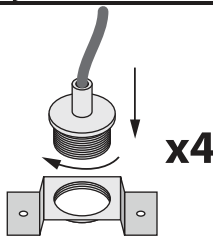
## CABLE SUSPENSION - Parts Sold Separately

Attach cable bases to 4 corners of the LED panel with the supplied machine screws.



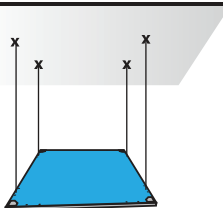
x4

**3** Screw the cable grips into the bases. Hand tighten.

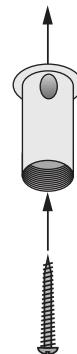


x4

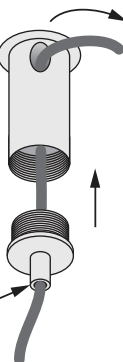
**4** Pull the cables to the ceiling and mark the 4 location points for the top cable mounts. The cables should be perfectly straight up and down.



**5** Secure the top cable mounts to the ceiling. Use the drywall anchors if there are no studs to attach to.

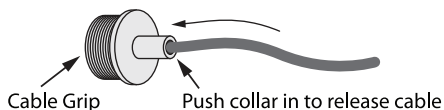


**6** Attach the remaining cable grip and pass the cable through the hole at the top of the mount. Screw the grip into the mount and make hand tight. Pull the cable snug. You can release the cable by pushing up on the small collar on the cable grip.



Push up to release cable

Feed cable through each of the 4 cable grips. The cable should be flush with the bottom of the grip.



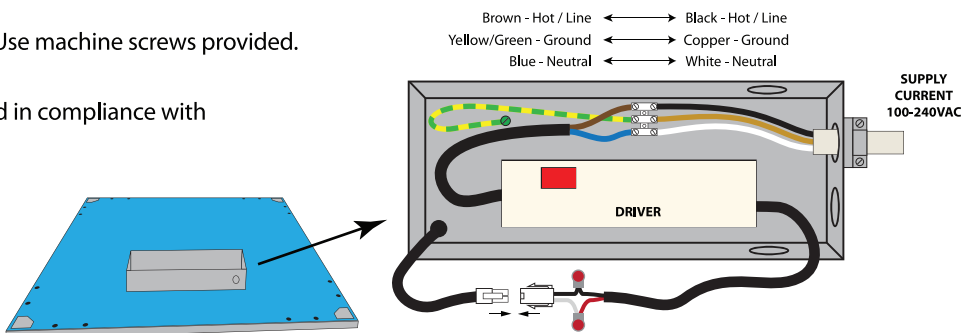
Cable Grip

Push collar in to release cable

## Non-Dimmable Driver Option

### Electrical Wiring

1. Secure driver into electrical box on back of panel. Use machine screws provided.
2. Shut off power to source for panel.
3. Install panel and wire according to instructions and in compliance with local rules and regulations.
4. Secure cover onto electrical box.
5. Restore power and check for correct operation.



## Dimmable Driver Option

### Electrical Wiring

1. Secure driver into electrical box on back of panel. Use machine screws provided.
2. Shut off power to source for led panel.
3. Install panel and wire according to instructions below and in compliance with local rules and regulations.
4. Secure cover onto electrical box.
5. Restore power and check for correct operation.
6. The wall dimmer can dim up to 10 drivers when wired in parallel depending on distance and electromagnetic conditions.

